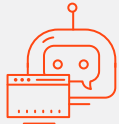


# IT SETUP



Foxtrot software automates time-consuming tasks to increase productivity and efficiency and focus on more important business initiatives.



## Foxtrot runs as a desktop application

The type of access gate to the machine is insignificant as long as it meets the organization's:

- ✓ Requirements
- ✓ Security Level
- ✓ Governance



## Foxtrot can be installed on a PHYSICAL or VIRTUAL machine

Foxtrot can be accessed through these virtual systems:

- ✓ Remote Desktop Connection
- ✓ TeamViewer
- ✓ Or Similar



## Foxtrot works with applications through user interface

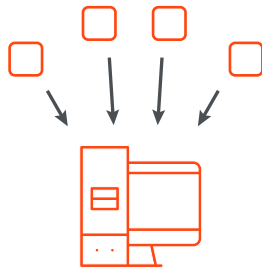
Foxtrot assumes the same permissions as the logged in user.

No more, no less.



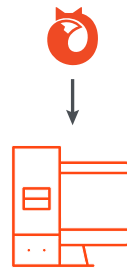
### STEP 1 Set Up Machine

Set up a machine that meets recommended requirements.



### STEP 2 Install Applications

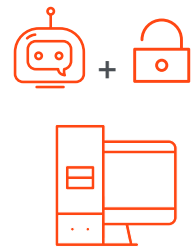
Install all applications on this machine that Foxtrot should interact with. All apps must be locally installed in order to interact. Or, have to access to web based business systems.



### STEP 3 Install Foxtrot

Install Foxtrot following the Deployment Guide

**INSTALL**



### STEP 4 Robot Access

Make sure the robot can access applications either using existing employee credentials or its own.

# TECH REQUIREMENTS

## Machine Requirements



### ACCESS APPLICATIONS

Access to all of the necessary applications (such as ERP system, MS Office, etc.)



### ADMIN LOGIN

Ability to log in with an account that has local administrator rights during the installation. After the installation, local administrator rights are no longer required.



### EMPLOYEE LOGIN

Log into either an existing employee's account or have its own credentials to ensure correct rights & security.

## System Requirements



### RECOMMENDED

- ✓ 2.0 GHz processor or higher
- ✓ 4 CPU cores or more
- ✓ 16 GB RAM or higher
- ✓ 500 MB hard drive space or higher
- ✓ 1024x768 display resolution or higher
- ✓ Dual monitors
- ✓ Internet Explorer 11
- ✓ Local administrator rights



### MINIMUM

- ✓ 1.8 GHz processor
- ✓ 2 CPU cores
- ✓ 3 GB RAM
- ✓ 300 MB hard drive space
- ✓ 1024x768 display resolution
- ✓ Internet Explorer 9
- ✓ Local read, write, execute, delete rights



### SUPPORTED OPERATING SYSTEMS

- ✓ Windows 10
- ✓ Windows 8.1
- ✓ Windows 8
- ✓ Windows 7
- ✓ Windows Vista (SP2 or higher)



### SUPPORTED SERVERS

- ✓ Windows Server 2016
- ✓ Windows Server 2012
- ✓ Windows Server 2008 (SP2 or higher)
- ✓ Windows Server 2003 (SP2 or higher)



### SUPPORTED BROWSERS

- ✓ Internet Explorer 11
- ✓ Internet Explorer 10
- ✓ Internet Explorer 9

# LOCAL VS. SERVER DEPLOYMENT



Foxtrot software automates time-consuming tasks to increase productivity and efficiency and focus on more important business initiatives.

## Local Deployment



**MY PC**



**Foxtrot Installed**



**Licenses Installed**  
(Prevents sharing licenses)



### **BENEFIT**

License will always be available to you.

## Server Deployment



### **MANAGING MACHINE**

Hosts:  
Licenses  
Database Files  
Security  
Activity Log  
Global Defaults



### **FOXTROT SUITE FOLDER**

Folder is shared to domain



### **CLIENT MACHINES**

If given permission, a physical or virtual machine in the domain can utilize one of the shared licenses.

Client machines cannot alter the licenses.

Since the licenses are shared, only the managing machine can alter.



### **BENEFITS**

Allows for all licenses to be stored and managed in a centralized location.

Allows for centralized user logins.

Allows for centralized activity logs

Maximum use of concurrent licensing system