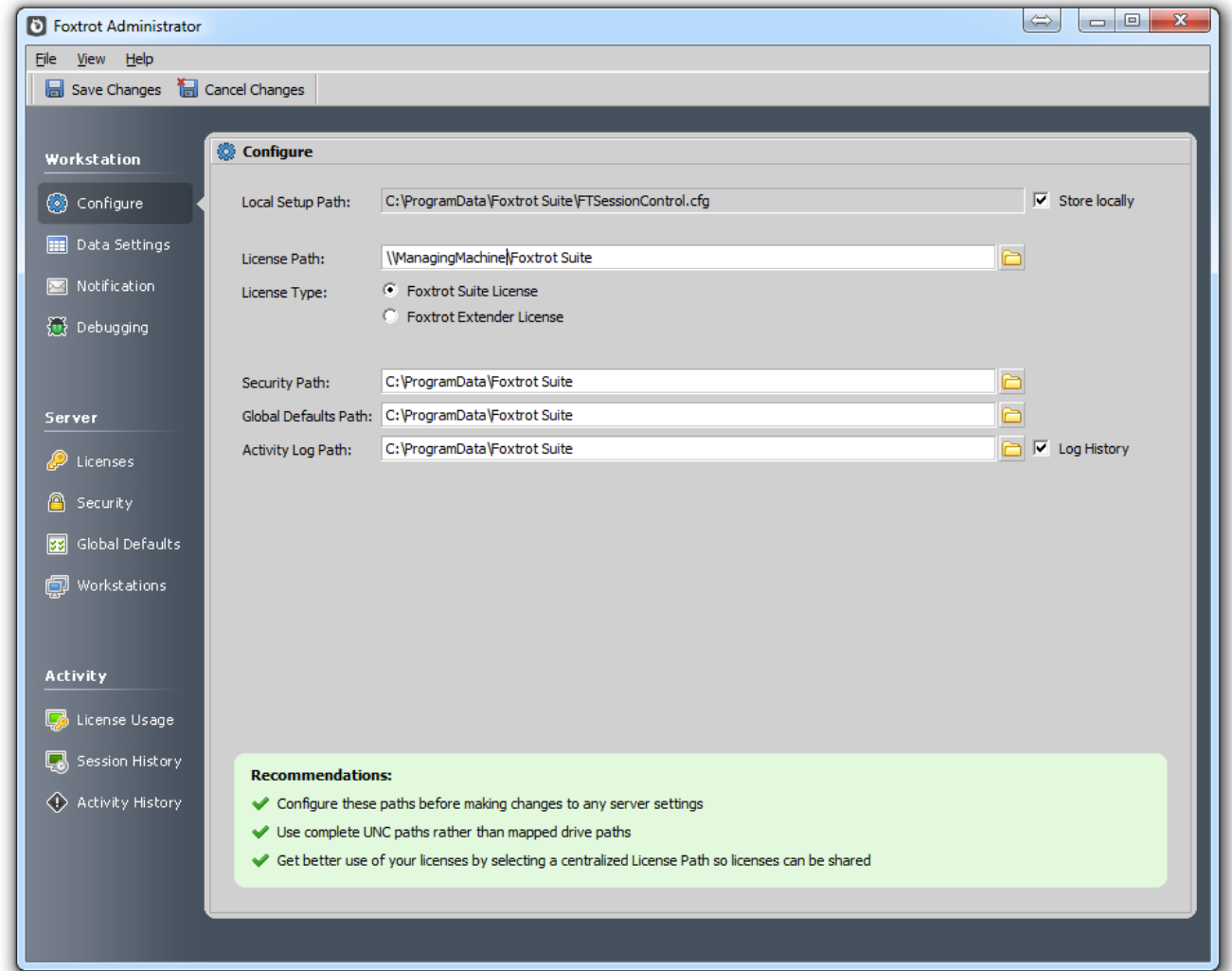


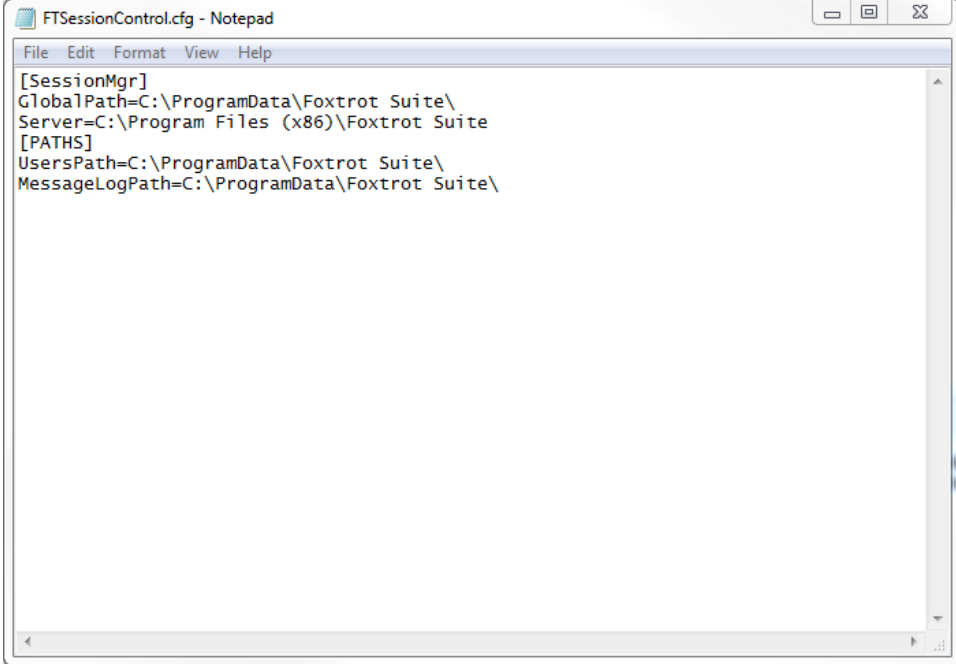
Configure

- **Local Setup Path**
 - FTSessionControl.cfg
 - Cannot change from default path
- **License Path**
 - FTSuite.lf & RPA2.lf
 - Locked files
 - Defaults to installation path
- **Security Path**
 - FTConfiguration.mdb
 - Defaults to “C:\ProgramData\Foxtrot Suite” directory
- **Global Defaults Path**
 - FTGlobals.mdb
 - Defaults to “C:\ProgramData\Foxtrot Suite” directory
- **Activity Log Path**
 - FTSystem.mdb
 - Defaults to “C:\ProgramData\Foxtrot Suite” directory



FTSessionControl.cfg and the Local Setup Path

- Stores the following:
 - The License Path
 - The Activity History Path
 - The Global Defaults Path
 - The Security Path
 - The Enhanced Data Wizard configuration
 - Emulator information for Foxtrot Legacy
- For quick activation, this file may be *dropped* to all user's Local Setup Path.
 - Automatically sets Security, Global Defaults, and Activity Log paths.
 - Foxtrot Legacy users will need to change the machine name.



```
FTSessionControl.cfg - Notepad
File Edit Format View Help
[SessionMgr]
GlobalPath=C:\ProgramData\Foxtrot Suite\
Server=C:\Program Files (x86)\Foxtrot Suite
[PATHS]
UsersPath=C:\ProgramData\Foxtrot Suite\
MessageLogPath=C:\ProgramData\Foxtrot Suite\
```

FTConfiguration.mdb and the Security Path

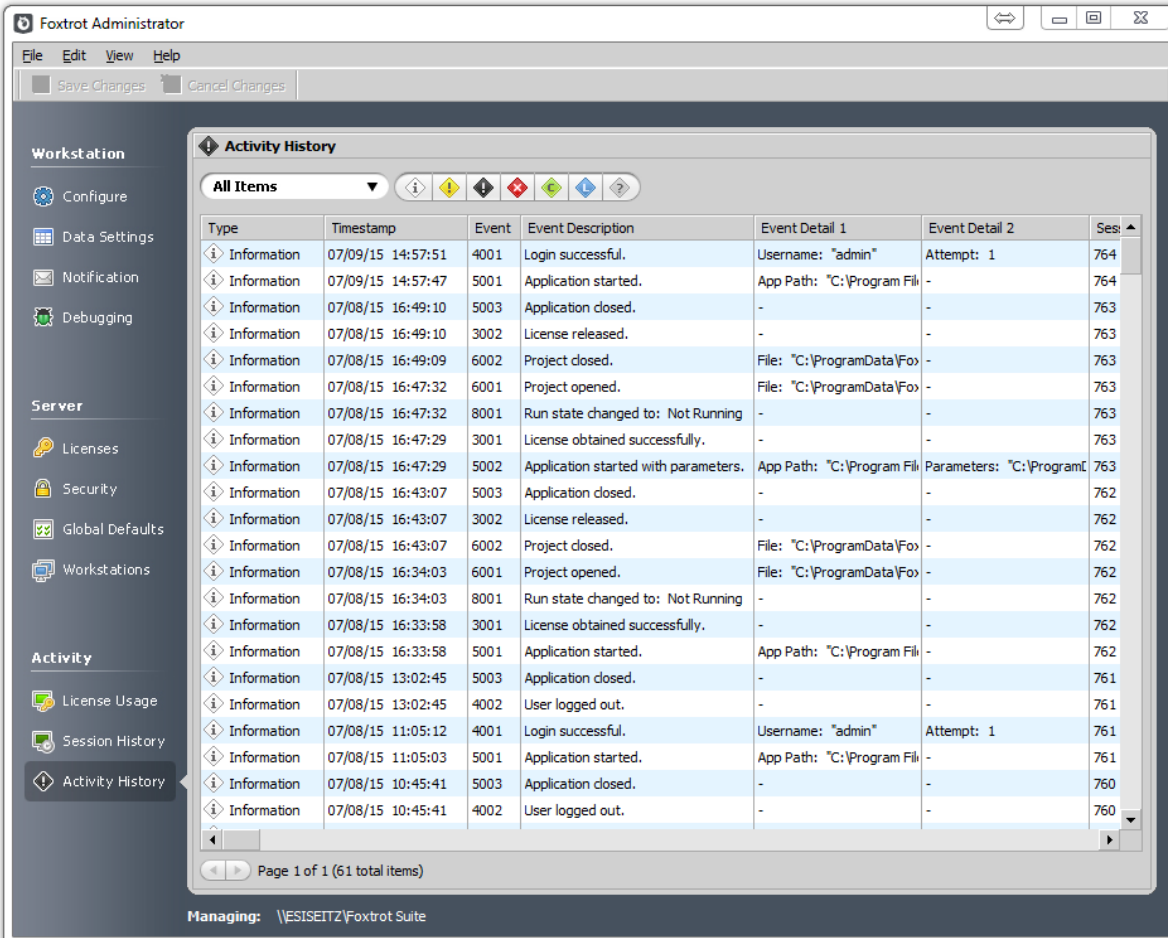
- Stores Information such as
 - User Profile Information
 - Emulator information (all Foxtrot Legacy settings & preferences)
 - Foxtrot settings & preferences
- Password protected database

FTGlobals.mdb and the Global Defaults Path

- Stores information such as:
 - Everything under the “Global Defaults” Tab
 - Authentication Method
 - Emulator information (Workstations Tab) and default locations for trace files (Foxtrot Legacy)
- Password protected

FTSystem.mdb and the Activity Log Path

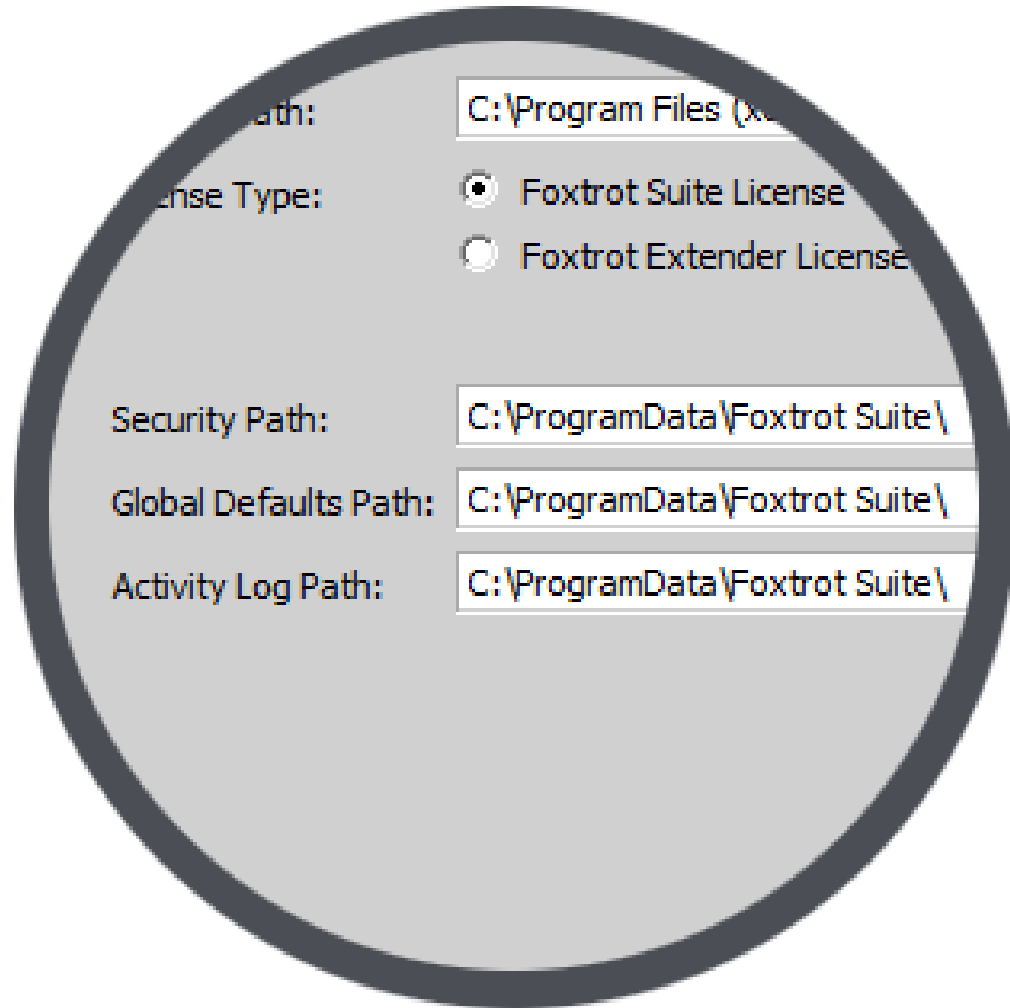
- Stores Information such as
 - Activity History
 - Session History
 - License Usage
- Password protected



The screenshot shows the Foxtrot Administrator interface with the Activity History window open. The window displays a table of system events. The table has the following columns: Type, Timestamp, Event, Event Description, Event Detail 1, Event Detail 2, and Ses. The table contains 20 rows of log entries.

Type	Timestamp	Event	Event Description	Event Detail 1	Event Detail 2	Ses
Information	07/09/15 14:57:51	4001	Login successful.	Username: "admin"	Attempt: 1	764
Information	07/09/15 14:57:47	5001	Application started.	App Path: "C:\Program Fil	-	764
Information	07/08/15 16:49:10	5003	Application closed.	-	-	763
Information	07/08/15 16:49:10	3002	License released.	-	-	763
Information	07/08/15 16:49:09	6002	Project closed.	File: "C:\ProgramData\Fox	-	763
Information	07/08/15 16:47:32	6001	Project opened.	File: "C:\ProgramData\Fox	-	763
Information	07/08/15 16:47:32	8001	Run state changed to: Not Running	-	-	763
Information	07/08/15 16:47:29	3001	License obtained successfully.	-	-	763
Information	07/08/15 16:47:29	5002	Application started with parameters.	App Path: "C:\Program Fil	Parameters: "C:\ProgramC	763
Information	07/08/15 16:43:07	5003	Application closed.	-	-	762
Information	07/08/15 16:43:07	3002	License released.	-	-	762
Information	07/08/15 16:43:07	6002	Project closed.	File: "C:\ProgramData\Fox	-	762
Information	07/08/15 16:34:03	6001	Project opened.	File: "C:\ProgramData\Fox	-	762
Information	07/08/15 16:34:03	8001	Run state changed to: Not Running	-	-	762
Information	07/08/15 16:33:58	3001	License obtained successfully.	-	-	762
Information	07/08/15 16:33:58	5001	Application started.	App Path: "C:\Program Fil	-	762
Information	07/08/15 13:02:45	5003	Application closed.	-	-	761
Information	07/08/15 13:02:45	4002	User logged out.	-	-	761
Information	07/08/15 11:05:12	4001	Login successful.	Username: "admin"	Attempt: 1	761
Information	07/08/15 11:05:03	5001	Application started.	App Path: "C:\Program Fil	-	761
Information	07/08/15 10:45:41	5003	Application closed.	-	-	760
Information	07/08/15 10:45:41	4002	User logged out.	-	-	760

How Can I Remember All This?



- Think alphabetically
 - Security = FT**Configuration**
 - Global Defaults = FT**Globals**
 - Activity = FT**System**
- Don't confuse Global Defaults with User Preferences